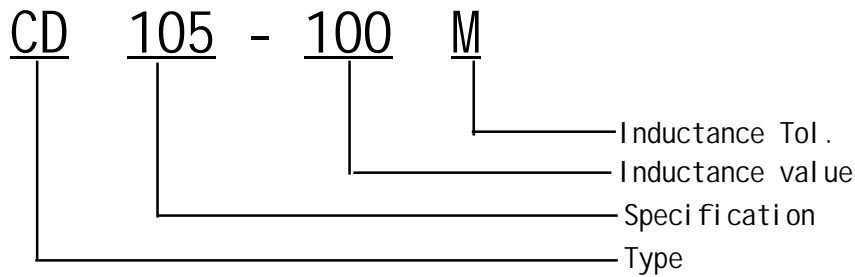


SMD Power Inductors CD105 Series

贴片功率电感CD105 系列



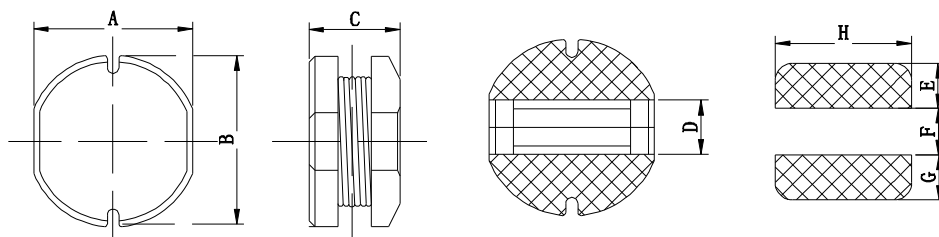
I .Ordering Code:



※ Inductance Tol. J: $\pm 5\%$, K: $\pm 10\%$, M: $\pm 20\%$, N: $\pm 30\%$.

※ Inductance value. 1R0: 1.0uH, 100: 10uH, 101: 100uH, 102: 1000uH.

II .Configuration&Dimensions: (mm)



Size	A	B	C(max)	D	E	F	G	H
CD105	9.00 \pm 0.30	10.0 \pm 0.30	5.80	3.20	3.75	2.50	3.75	9.50

III.Materials :

- a.Core: Ferrite DR core
- b.Wire: Enamelled copper wire
- c.Terminal: Cu/Sn
- d. Encapsulate: Epoxy novolac molding compound
- e. Remark: Products comply with RoHS' requirements

IV.General Specification :

- a.Storage temp. : -40 $^{\circ}$ C ----+125 $^{\circ}$ C
- b.Operating : -40 $^{\circ}$ C ----+105 $^{\circ}$ C
- c.Temp. rise : 40 $^{\circ}$ C Max. at rated current.





CD105 Series

Part No.	L (uH)	Test Freq .(KHZ)	Tolerance	D.C.R(Ω)	Rated Current
				MAX	(A)
CD105-1R0N	1.00	100K/0.25V	$\pm 30\%$	8.45m	8.00
CD105-1R8M	1.80	100K/0.25V	$\pm 30\%$	15.60	6.50
CD105-2R7M	2.70	100K/0.25V	$\pm 30\%$	17.8m	5.50
CD105-3R3M	3.30	100K/0.25V	$\pm 30\%$	19.5m	5.00
CD105-4R7M	4.7	100K/0.25V	$\pm 20\%$	22.1m	4.60
CD105-5R6M	5.6	100K/0.25V	$\pm 20\%$	23.8m	4.00
CD105-6R8M	6.8	100K/0.25V	$\pm 20\%$	26.0m	3.60
CD105-8R2M	8.2	100K/0.25V	$\pm 20\%$	31.2m	3.20
CD105-100M	10.0	1.0K/0.25V	$\pm 20\%$	34.5m	2.58
CD105-120M	12.0	1.0K/0.25V	$\pm 20\%$	40.3m	2.44
CD105-150M	15.0	1.0K/0.25V	$\pm 20\%$	45.5m	2.26
CD105-180M	18.0	1.0K/0.25V	$\pm 20\%$	48.5m	2.13
CD105-220M	22.0	1.0K/0.25V	$\pm 20\%$	70.2m	1.93
CD105-270M	27.0	1.0K/0.25V	$\pm 20\%$	84.1m	1.74
CD105-330M	33.0	1.0K/0.25V	$\pm 20\%$	92.3m	1.46
CD105-390M	39.0	1.0K/0.25V	$\pm 20\%$	0.125	1.36
CD105-470M	47.0	1.0K/0.25V	$\pm 20\%$	0.135	1.26
CD105-560M	56.0	1.0K/0.25V	$\pm 20\%$	0.159	1.15
CD105-680M	68.0	1.0K/0.25V	$\pm 20\%$	0.200	1.10
CD105-820M	82.0	1.0K/0.25V	$\pm 20\%$	0.230	0.980
CD105-101M	100.0	1.0K/0.25V	$\pm 20\%$	0.260	0.950
CD105-121M	120.0	1.0K/0.25V	$\pm 20\%$	0.351	0.870
CD105-151M	150.0	1.0K/0.25V	$\pm 20\%$	0.403	0.740
CD105-181M	180.0	1.0K/0.25V	$\pm 20\%$	0.49	0.700
CD105-221K	220.0	1.0K/0.25V	$\pm 10\%$	0.57	0.650
CD105-271K	270.0	1.0K/0.25V	$\pm 10\%$	0.73	0.540
CD105-331K	330.0	1.0K/0.25V	$\pm 10\%$	0.845	0.500
CD105-391K	390.0	1.0K/0.25V	$\pm 10\%$	1.04	0.460
CD105-471K	470.0	1.0K/0.25V	$\pm 10\%$	1.18	0.400
CD105-561K	560.0	1.0K/0.25V	$\pm 10\%$	1.42	0.300
CD105-681K	680.0	1.0K/0.25V	$\pm 10\%$	1.99	0.280

VI. 额定电流 Reted Current:

电感值下降至初始值的10%或温度上升至40℃时的直流电流值中的最小值。(环境温度20℃)

This indicates the value of current when the inductance is 10% lower than its initial value at D.C. superposition or D.C. current when T=40℃ whichever is lower. (Ta=20℃)

VII. 无铅制品 Lead-free

VIII. 测试仪器 Test instrument : HP4284A, 502BC, CH1062A.

